



# Basic Perioperative ,ICU and Emergency TEE Course

## 30. october 2024

### Venue

NordSim,  
Aalborg University  
Hospital  
Forskningens Hus,  
Sdr. Skovvej 15  
9000 Aalborg  
Denmark

### Precourse qualifications

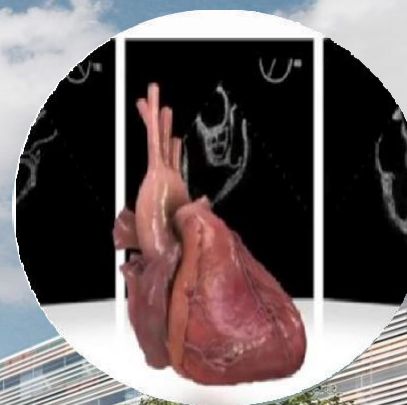
No prior experience is  
required.

Language: English, if any  
non-Danish-speaking  
participants.

### Cutting edge e-learning & workshop

An intensive and demanding  
course containing two parts:

- Pre-course e-learning
- One day workshop including  
simulation, short lectures and  
clinical challenging cases



Number one  
e-learning  
used in the  
European  
Certification in  
TEE

### Fee

The course fee is 3850  
DKK and includes  
e-learning, work-shop  
and lunch.

A certificate of  
attendance is issued upon  
completion of the e-  
learning posttest and the  
workshops.

Join the  
USabcd course  
on Perioperative  
Transesophageal  
Echocardiography  
in Aalborg,  
Denmark  
30. october 2024

## Objectives:

To provide basic  
echocardiographic skills

for cardiothoracic anesthesiologists,  
surgeons and cardiologists in order  
to perform a correctly basic TEE  
examination.

## Trainers and lecturers:

A team of cardiothoracic  
anesthesiologists,  
cardiologists and cardiac surgeons, all  
experts in TEE, having many years of  
experience as teachers and  
supervisors

## Further information

For registration please contact:

Jane Bragenholt  
Frandsen Course  
secretary  
Aalborg University Hospital  
Denmark  
Phone: 45 - 97666280  
[j.frandsen@rn.dk](mailto:j.frandsen@rn.dk)  
[www.nordsim.dk](http://www.nordsim.dk)

## Sample of Course programme:

**The practical sessions are performed as hands on training**

08.00 - 08.15	Introduction, highlights from e-learning, <i>breakfast</i>
08.15 - 09.00	US physics and knobology
	<b>TEE Simulation</b>
09.00-11.00	The most used 2D TEE standard views intraoperatively, in ICU and in the emergency room
11.00-12.00	2D TEE views for assessment of myocardial ischemia and volume responsiveness
12.00-12.30	<i>Lunch (included)</i>
12.30-13.30	Basic intraoperative assesement of the aortic valve
13.30-14.30	Basic intraoperative examination of the mitral valve
14.30-14.45	<i>Coffe break</i>
14.45-15.45	Clinical scenario training and certification
15.45-16.00	Discussions, evaluation