

## Comprehensive Perioperative TEE Course

31. october and 1. november 2024

### Venue

NordSim  
Aalborg University  
Hospital  
Forskningens Hus,  
Sdr. Skovvej 15  
9000 Aalborg  
Denmark

### Precourse qualifications

A previous attendance  
to the Basic TEE course  
is recommended.  
Language: English, if  
any non-Danish-  
speaking participants.

### Cuttingedge e-learning & workshop

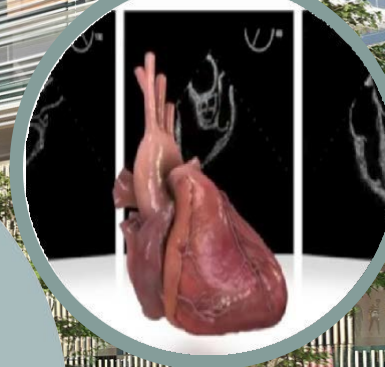
An intensive and demanding course  
containing three parts:

- Pre-course e-learning
- One day work-shop including:  
highlights, digital TEE-simulation,  
challenging case discussion
- One day post-course "follow me"  
including: intraoperative TEE with  
an expert, hemodynamic  
measurements by using EchoPAC,  
case discussion

Number one  
e-course used in  
the European  
Certification  
in TEE

### Fee

- 5400 DKK for both days.
- Accommodation is not  
included.



## Perioperative TEE Course

- The e-learning program is comprehensive, compact, demanding and involving.
- It is built in order to satisfy the varying levels of knowledge, from the basic level to attendees who are preparing for the TEE accreditation exam. The program is the result of a considerable experience in TEE and includes numerous examples of intra-operative TEE loops and clinical cases.
- It is primarily dedicated to the thorax anesthesiologists, thorax surgeons and cardiologists who are getting in contact with the "heart surgical patient" in the perioperative period.
- The material is made in agreement with EACTA (European Association of Cardiothoracic Anaesthesiologists), ESC (European Society of Cardiology) and EACVI (European Association of Cardiovascular Imaging) and meets their guidelines. Therefore it can be used in the preparation for the European Accreditation Exam in TEE.

## The objectives for the Comprehensive Perioperative TEE course

To provide the participants the needed knowledge to:

- Perform a comprehensive TEE examination.
- Evaluate the ventricular function and heart valves.
- Understand the hemodynamic principles which are the basis of the function of the heart.
- Diagnose and grade various forms of pathology of the myocardium, heart valves, thoracic aorta and pericardium.
- Make their decisions in the operating room and the ICU as correct as possible

On the TEE course there will be opportunities for highlights, discussions, hands-on and TEE simulation.





## Trainers and lecturers

A team of experts in TEE – both cardiothoracic anesthesiologists and cardiologists – having a large experience in TEE as clinicians, teachers and supervisors.

## Course leader

Angela Mahdi,  
Consultant, clinical teacher,  
Aalborg University Hospital

## Sample of Course programme


The practical sessions are performed as hands on training:

### Day 1:

08.00-08.15	Introduction, highlights from e-learning, breakfast
8.15-10.30	Comprehensive intraoperative TEE-examination: digital simulation
10.30-10.45	<i>Break with coffee</i>
10.45-12.00	TEE-simulation and discussions: The aortic valve pathology
12.00 – 12.30	<i>Lunch (included)</i>
12.30 -14.00	TEE-simulations and discussions: The mitral valve pathology
14.00 -15.15	3D TEE: Image aquisition and display
15.15-15.30	<i>Break with coffee</i>
15.30-16.00	The tricuspid and pulmonic valves
16.00-16.45	Scenario training (MCQ)
16.45-17.00	Evaluation, discussions, planning of day 2







A certificate of attendance is issued upon completion of the e-learning posttest and the workshops.

**Further information**  
For registration please contact:

Jane Bragenholt  
Frandsen  
Course secretary  
Aalborg University Hospital  
Denmark  
Phone: 45 - 97666280  
[j.frandsen@rn.dk](mailto:j.frandsen@rn.dk)  
[www.nordsim.dk](http://www.nordsim.dk)

## Sample of Course programme

### Day2:

08.00 - 8.15	Welcome, breakfast, planning of the day (participants will be informed of locations on day 1)
08.15 - 09.15	Assessment of volume responsiveness: lecture and discussions
09.15- 11.00 (About)	<i>Intraoperative TEE in the OR with an expert ("Follow Me") or MCQ</i>
11.00 – 12.00	Doppler ultrasound and haemodynamic calculations
12.00 – 12.30	<i>Lunch, included</i>
12.30 – 13.30 (About)	Intraoperative TEE in the OR with an expert or MCQ
13.30 – 15.00	LV strain
15.00 – 15.15	<i>Break with coffee</i>
15.15-16.45	Exam preparation, MCQ, scenario training
16.45-17.00	Evaluation and discussion

